



○WELCOME PACKET

Tampa Bay Watch

Summer Camp

Welcome to Tampa Bay Watch's

Marine Science Summer Camp!



We hope this letter finds you and your family well! We would like to welcome all of our new participating families and extend a great welcome back to each of our alumni families.

This packet contains valuable information to prepare you and your camper for summer camp:

1. Camp Agenda
2. Things You Need to Know: Drop-off and Pick-up, Meals, Photo Sharing Information, etc.
3. Summer Camp Social Invitation!

2018 Camp Sessions:

- June 4-8 Sea Monkey Camp
- June 11-15 Discovery Camp
- June 18-22 Sea Monkey Camp
- June 25-29 Discovery Camp and Sea Monkey Half-Day Camp
- July 9-13 Ocean Expedition Camp
- July 16-20 Sea Monkey Camp
- July 23-27 Discovery Camp
- July 30-Aug 3 Sea Monkey Camp

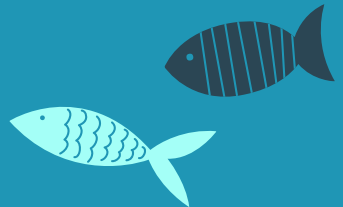
Please review all documents to ensure you are adequately prepared for summer camp 2018.

Thank you!

Sea Monkey Camp 2018

As you may have noticed, all waivers and releases were signed at the time of registration, therefore no additional paperwork is necessary at the start of camp. We will ask for parents to confirm medical needs and additional persons able to pick-up your child. Please note the drop-off and pick-up time for your child's camp, as we do not offer before or after care. We greatly appreciate your punctuality in picking up your camper.

As always, we are incredibly excited for our summer camp season and we look forward to seeing everyone soon! Please contact Katie Mastenbrook at kmastenbrook@tampabaywatch.org or call 727-867-8166 ext. 246 or 224 if you have more specific questions regarding our summer camp program.



Sea Monkey Camp Agenda

Daily Drop-Off and Pick-Up



- Camp starts promptly at **9:00 am** each day and ends at **4:00 pm**.
- Please bring your ID to confirm pick-up. At the start of camp, guardians will be asked to confirm person(s) authorized to drop off and/or pick up your child. All persons picking up campers will be asked to present an ID each day.
- We do not offer before and after care.
- If you will be late for either drop-off or pick-up, please notify a staff member as soon as possible. You can call the front desk at **727-867-8166 ext. 221** and they will relay the message.
- If your camper will be missing any portion of the day, staff must be notified as soon as possible, preferably the Monday of your camp session. Boat trips and activities will proceed as scheduled to accommodate all camp participants.
- At the start of camp, please clarify and confirm all medical or special needs for your camper.



Packing List



Bring all items **EVERY DAY**, and please **LABEL** everything!

- Sunscreen (no spray on, please)
- Water bottle (all campers receive a reusable TBW water bottle)
- Closed-toed, closed-heeled water shoes (no crocs)
- Hat, sunglasses, sunshirt/rashguard (optional, but encouraged)
- Lunch (except Friday) and snacks
- Bathing suit – wear to camp each day and be ready to get in the water
- Towel
- Change of clothes and shoes (Crocs/flip flops are okay for afternoon change of shoes)
- Snorkeling gear (mask and snorkel) – we will not use fins
- Bring an extra white shirt or old shirt that can be used for Gyotaku fish printing and/or tie dying
- Any medication needed for safety of camper (i.e. EpiPen, inhaler)



Camp Gear for Sale



- We will have items for sale on **Monday and Friday** of each week of camp. Items include: sun shirts, hats, and dry bags. We will only accept credit card payments this year. All other items must be purchased online at tampabaywatch.org/tbw-store.

Meals

We kindly ask that all campers refrain from bringing peanut-based products for lunch and snack items due to the high frequency of peanut allergies. Campers must pack a lunch each day (except Friday) and may want to pack light snacks that are easy to eat “on the go”. We will provide some small snack foods. Friday, TBW provides cheese or pepperoni pizza from Marco’s. **Please clarify and reiterate any dietary allergies or restrictions for your camper.**



Camp Photos

We will be photographing the fun throughout the weeks of camp. Photos will be available at the **end of the summer**, at no cost, through Shutterfly. To access photos, please visit estuaryadventures.shutterfly.com. You will need to create a free Shutterfly account if you do not already have one. Pictures are separated into camp weeks; find the week your camper attended and browse through the album. To save photos, hold your mouse over the photo and select “download picture” or “save to account”. We will email you when photos are available.



Schedule

Tampa Bay Watch education staff reserves the right to change and/or cancel activities due to foul weather or time constraints

Each day we will be doing a variety of fun and exciting marine science, water and lab-based activities. Examples of the activities that we will do and topics we cover throughout the week include: snorkeling, seining, otter trawl, plankton encounters, fish adaptations, coastal habitats, sea turtles, shark biology, Gyotaku fish printing, and other camp games and arts and crafts

MONDAY

9:00 AM : Drop-off
AM: Introduction/ Swim
Evaluation
12:00-1:00 : Lunch
PM: Water/ Lab Activity
4:00 PM: Pick-up

TUESDAY

9:00 AM : Drop-off
AM: Water/ Lab Activity
12:00-1:00 : Lunch
PM: Water/ Lab Activity
4:00 PM: Pick-up

WEDNESDAY

9:00 AM : Drop-off
AM: Water/ Lab Activity
12:00-1:00 : Lunch
PM: Water/ Lab Activity
4:00 PM: Pick-up

THURSDAY

9:00 AM : Drop-off
AM: Water/ Lab Activity
12:00-1:00 : Lunch
PM: Water/ Lab Activity
4:00 PM: Pick-up

FRIDAY

9:00 AM : Drop-off
AM: Water/ Lab Activity
12:00-1:00 : Lunch
(Pizza provided by
Tampa Bay Watch)
PM: Preparation
for Pirate Relay

2:30 PM: Pirate Relay
Races, Summer Camp
Slideshow
4:00 PM: Pick-up





Friday Fun Day

Pirate Day

Friday's we dress as pirates and enjoy a day full of fun pirate activities. Have your camper come dressed in their best pirate garb. Please do not bring any pirate weapons. At the end of the day, teams will battle in a pirate relay race.

Pizza is provided for lunch on **Friday**.

Parents are encouraged to attend the pirate relay races and camp slideshow at 2:30 PM and can take campers home afterward. Staff will still be available until normal 4:00 pm sign-out time if guardians are unable to attend.

**Thank you again from Tampa Bay Watch, Inc. and our staff members.
We are excited for a FUN filled summer camp season!!**





Who Screams for Ice Cream?

Join Tampa Bay Watch for our **FREE** Ice Cream Social and Open House!

Thursday, May 31, 2018
5:30-7:30 pm

Tampa Bay Watch Marine and Education Center
3000 Pinellas Bayway South, Tierra Verde, FL 33715
727-867-8166, ext. 246

Bring the whole family! Meet our educators, tour the facility, and celebrate the start of summer! Meet and Greet and facility tours will be offered at 6:00 and 6:45.



Ice cream generously donated by

