

The Bay Watch Leg

A quarterly publication for Tampa Bay Watch partners

Winter 2020



Much thanks to our supporters...

TERRY & GINNY MCCARTHY SPONSOR THE DISCOVERY CENTER EXHIBIT GALLERY

Tampa Bay Watch would like to extend our sincere thanks to Terry and Ginny McCarthy for sponsoring the Exhibit Gallery at the new Tampa Bay Watch Discovery Center!

The couple shared some reasons why they chose to invest in our organization. "My company has been a corporate sponsor of Tampa Bay Watch for several years. It is exciting to watch how the organization has grown and we are proud to participate in helping the new Discovery Center located at the St Pete Pier. The center will enrich and educate the visitors and help bring awareness to the importance of preserving our beautiful waterfront environment."

Located halfway down the new St Pete Pier's over-water walkway, the Tampa Bay Watch

Discovery Center will open May 30, 2020. The Exhibit Gallery will tell the story of Tampa Bay and share the history and recovery of this unique ecosystem, and the role of Tampa Bay Watch, to visitors from around the corner and around the world. The focal point of the Exhibit Hall is a centerpiece aquarium that showcases many of the species found in our local waters. There will also be a touch tank, interactive displays, video presentations, and docent-led tours which will combine for an unforgettable experience and a newfound respect for our local environment.

We greatly appreciate the McCarthy's support which is crucial in our capacity to grow environmental education opportunities in the community and to share the wonder and importance of a healthy bay with a significantly expanded audience.



Did you know...

Estuaries provide habitat for about 68% of the U.S. commercial fish catch and 80% of recreational catch.



EVENTS ON THE HORIZON:

March 4: Summer camp registration opens to public

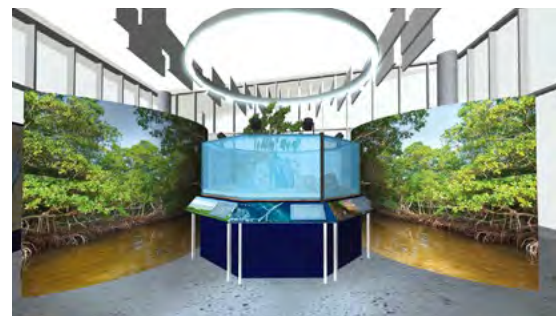
March 19 & 20: Oyster shell project at MacDill AFB

March 21: Great American Cleanup

April 17, 18, 23, 24: Oyster shell project at Whiskey Stump Key

April 24: Tampa Bay Rays game promotion

Specified weekday mornings:
Oyster reef ball construction



IN THIS ISSUE

- 👉 Exhibit Hall Sponsor Joins the Discovery Center
- 👉 McKay Bay project completion
- 👉 Park & Plug at TBW
- 👉 Staff day at Busch Gardens

- 👉 Corporate Member Spotlight: Elite Watersports
- 👉 Corporate Member Acknowledgement
- 👉 Summer Camp Registration

It's a Wrap at
McKAY BAY!



McKay Bay South oyster reef project began in December 2016 and wrapped up last November.

Over the course of the project, 1,177 volunteers from numerous corporate groups, school groups, colleges, and the Tampa Bay community created approximately 3,170 linear feet of reef and two 45' diameter circular reefs using more than 310 tons of fossilized shell!

Thank you to everyone involved in this multi-year project, including our fantastic funders: **Tampa Bay Environmental Restoration Fund, Pollution Recovery Fund of Hillsborough County, Royal Bank of Canada, US Fish and Wildlife Service, Bloomin' Brands, and Mosaic.** A special thanks to the **City of Tampa** for allowing us to stage the project at Desoto Park.

1,177
VOLUNTEERS
IN 3 YEARS
MADE 3,170
LINEAR FEET OF REEF
& TWO 45' DIAMETER
Circular Reefs
USING MORE THAN
310 tons
of FOSSILIZED SHELL



Tampa Bay Watch Crew Enjoys a
BACKSTAGE PASS AT BUSCH GARDENS

Tampa Bay Watch staff were recently treated to a special behind-the-scenes tour at Busch Gardens.

Highlights of the day included meeting the resident elephants and kangaroos, experiencing a safari to feed giraffes, and touring the animal hospital and nutritional center.

SeaWorld Busch Gardens Conservation Fund has been a long-term supporter of Tampa Bay Watch by funding our annual Scallop Search and marine debris programs. Additionally, many of Busch Gardens staff members participate as volunteers at our restoration projects. Tampa Bay Watch also partners in providing projects for their summer campers.



At Tampa Bay Watch, just

PARK & PLUG!

Take advantage of the new EVC at the Tampa Bay Watch Marine and Education Center

Tampa Bay Watch is proud to be a part of "Park & Plug", a new pilot program from Duke Energy to bring electric vehicle (EV) charging stations to our community. Our electric vehicle charging station—provided at no cost through the program—was recently installed at the Tampa Bay Watch Marine and Education Center in Tierra Verde.

The goal of the "Park & Plug" program is to enhance the visibility of our sustainability efforts, provide an added benefit to employees who drive EVs, and promote the adoption of clean transportation from clean energy.



Help us protect Florida's largest open-water estuary!



Demonstrating environmental citizenship at its best:

CORPORATE MEMBERS

Tampa Bay Watch relies upon corporate members to be **active partners in protecting and restoring our estuary**. Their support makes Tampa Bay a healthier, more desirable place to work and play by funding essential habitat restoration and education programs. To become a corporate member, contact Nina Ardlé at (727) 867-8166 x249 or nardle@tampabaywatch.org.

A big thanks to our corporate members:

400 Beach Seafood & Tap House Alden Suites	Konica
American Strategic Insurance	Lewis, Longman & Walker
Amuni Financial, Inc	Limelight Photography
Argos USA LLC	McNichols Company
ARS Wealth Advisors	Mosaic
Baldwin Krystyn Sherman Partners	Mullen Corporation
Bloomin' Brands	Paradise News
Calhoun International	Paradigm Learning
Carmelita's Rum	Pascia & Pascia Dentistry
Catalina Marketing	Paul J. Skipper Inc
COMANCO Environmental Corp	Phoenix Venture Philanthropy Foundation
Cooper's Hawk Winery	Reef Innovations, Inc.
Coppertail Brewing Company	Resort Realty
Courtesy Valet	S.A.L.T. Payroll Consultants Inc.
Covanta	Sabal Trust
Directed Capital	Salt Pines
Diversified Telecom Services, Inc.	Sand Dunes Beach Services
Don Cesar	Saunders & Walker, P.A
Drift Local	Southpoint Financial Services
Electric Supply, Inc.	St. Petersburg Distillery
Elite Watersports	Sweetwater Brewing Co.
FairWarning	Tampa Bay Parrot Heads
Ferman Auto	Tampa Bay Pilots Association
Florida Info Guide	Tampa Bay Rays
Florida Pure Sea Salt	Tampa Bay Yacht Management
General Dynamics	TECO Energy
Go Black Fin	Tennant Special Risk
Great Bay Distributors	TJM Properties
Greenacre Properties, Inc.	Tradewinds
Gulf Eagle Supply	TruGreen Commercial
Healthcare IQ	uDream Events
Jabil	Wilcox Nursery & Landscape
Kahuna's	Wiss
Kahwa Coffee	WRB Enterprises
Kennedy Investments / DAK Corporation	Xenegrade



Welcome aboard.

ELITE WATERSPORTS

One of our new corporate members!

Elite Watersports raised over \$6,000 for Tampa Bay Watch through their season opener party last November. We are greatly appreciative of their efforts and the entire kiteboarding community for all they do to help preserve our waterways.



Pay them a visit for watersports lessons, new and used gear, and beyond! **Elite Watersports** is located at 4100 34th St South in St. Petersburg.



Trace This Place

Does this place look familiar?

Be the first to name this place in an email to Rachel Arndt at randt@tampabaywatch.org and win a TBW ball cap!

One entry per person.

Wood Stork

MYCTERIA AMERICANA

The Wood Stork is the only stork that breeds in the US. Its late-winter mating season is timed to the Florida dry season when its prey—fish—become concentrated in shrinking pools of water. *Source: nationalgeographic.com*

WINGSPAN: 4-6 FEET

HABITAT: WETLANDS, PONDS, MARSHES

DISTINGUISHING FEATURE: STANDING OVER 3 FEET TALL, IT TOWERS ABOVE ALMOST ALL OTHER WETLAND BIRDS





NONPROFIT ORG
US POSTAGE
PAID
ST PETERSBURG FL
PERMIT NO 182

3000 Pinellas Bayway South
Tierra Verde, FL 33715
727.867.8166
tampabaywatch.org



TAMPA BAY WATCH MISSION:

Tampa Bay Watch is dedicated to the protection and restoration of the Tampa Bay estuary through scientific and educational programs.

WANT TO GO PAPERLESS?

If you wish to receive an electronic copy of this newsletter to save paper, time, and resources, please notify Rachel Arndt at rarndt@tampabaywatch.org to request electronic-only delivery.



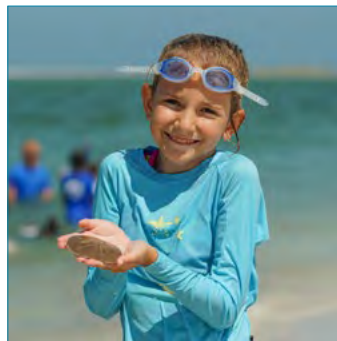
Thank you to GEORGE & ISABEL ADAMS and ESI for their sponsorship of the 2019 issues of the **Bay Watch Log!**

Get your kids in on the Action!

SUMMER CAMP REGISTRATION OPENS MARCH 4

Members enjoy a discount!

Join us this summer for an unforgettable camp experience immersed in the Tampa Bay estuary! Tampa Bay Watch's **Estuary EDventures Summer Camp** provides opportunities for kids 6-15 years of age to participate in a fun-filled, hands-on learning adventure focused on marine ecology.



Under the guidance of our professional education staff, campers will participate in boating trips, snorkeling and exploring native habitats, and collecting unique species inhabiting the estuary.

This is an experience that your child will not want to miss! Registration opens at **9 AM on March 2 for Tampa Bay Watch members** and **March 4 to the general public.**

Visit tampabaywatch.org to learn more about our summer camp program and to become a member of Tampa Bay Watch! Members enjoy a discount and early camp registration!

The Bay Watch Log is a quarterly newsletter designed to inform and educate the volunteers, members, partners, and sponsors of Tampa Bay Watch about environmental events, restoration opportunities, agency activities, and other environmental stewardship information.

Tampa Bay Watch, Inc. • 3000 Pinellas Bayway South • Tierra Verde • Florida . 33715
Tel: 727-867-8166 • Fax: 727-867-8188 • TAMPABAYWATCH.ORG