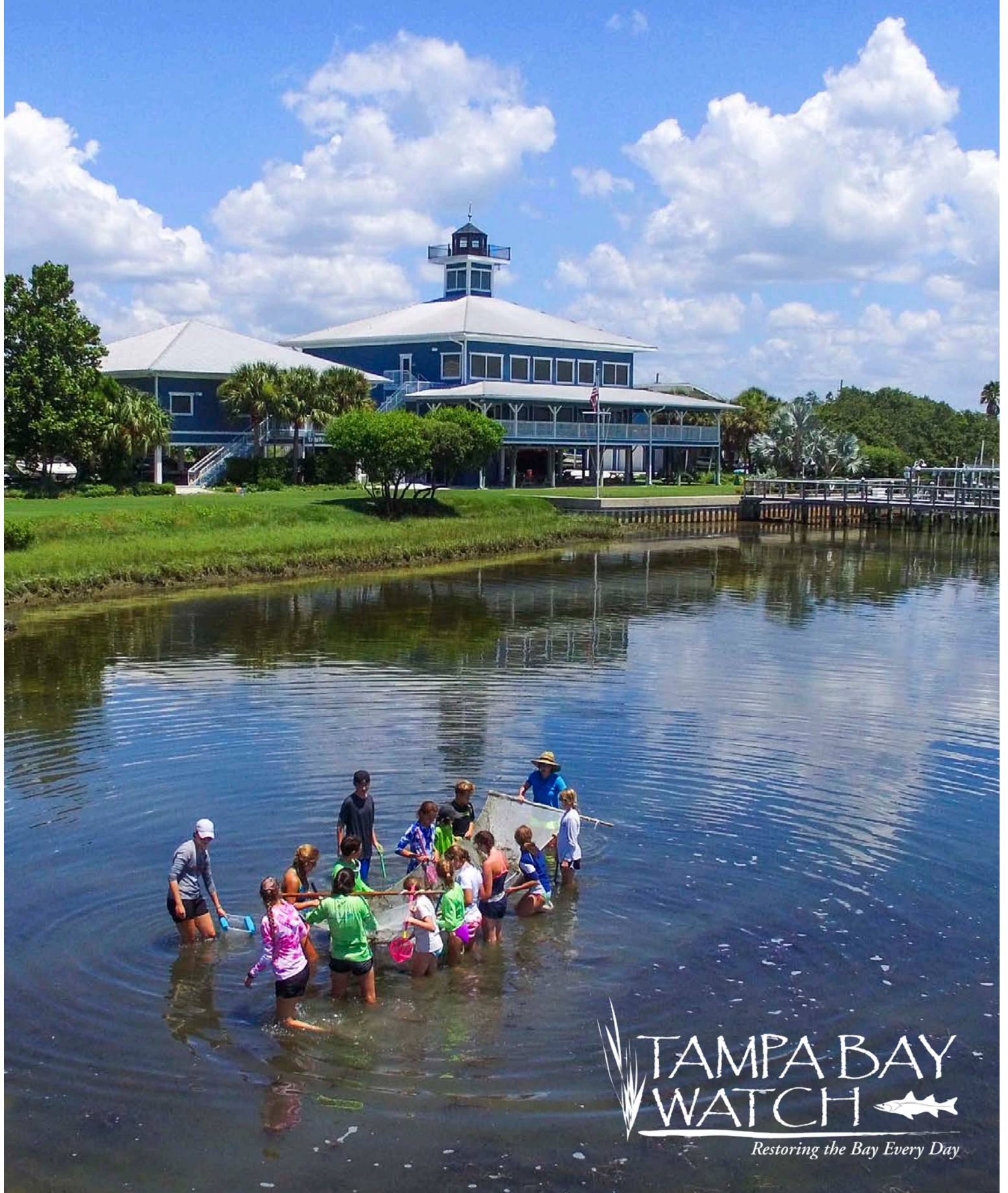



# 2019 ANNUAL REPORT



TAMPA BAY  
WATCH 

*Restoring the Bay Every Day*





# 2019 Annual Report

## Table of Contents:

|                                      |                    |
|--------------------------------------|--------------------|
| Mission, Staff, Board. ....          | <a href="#">3</a>  |
| History of Tampa Bay Watch .....     | <a href="#">4</a>  |
| Letter from the President. ....      | <a href="#">5</a>  |
| Discovery Center .....               | <a href="#">6</a>  |
| Vertical Oyster Gardens (VOGs) ...   | <a href="#">8</a>  |
| Habitat Restoration Statistics ..... | <a href="#">9</a>  |
| Bay Education for All .....          | <a href="#">10</a> |
| Education Statistics .....           | <a href="#">11</a> |
| Fundraising Event Recap .....        | <a href="#">12</a> |
| TBW Staff at Busch Gardens ....      | <a href="#">14</a> |
| Financial Picture .....              | <a href="#">14</a> |
| GuideStar Recognition .....          | <a href="#">14</a> |
| Volunteerism at TBW .....            | <a href="#">15</a> |
| Bay Guardians .....                  | <a href="#">16</a> |
| Legacy Society .....                 | <a href="#">16</a> |
| Corporate Members. ....              | <a href="#">17</a> |
| Donors & Contributors .....          | <a href="#">18</a> |



**Tampa Bay Watch**  
**Marine and Education Center**  
3000 Pinellas Bayway South  
Tierra Verde, FL 33716  
Tel: 727-867-8166  
Fax: 727-867-8188  
Web: [tampabaywatch.org](http://tampabaywatch.org)



**Tampa Bay Watch**  
**Discovery Center at the St. Pete Pier**  
700 2<sup>nd</sup> Ave NE  
St. Petersburg, FL 33701  
Tel: 727-291-4103  
Web: [tbwdiscoverycenter.org](http://tbwdiscoverycenter.org)



## MISSION:

Tampa Bay Watch is dedicated to the protection and restoration of the Tampa Bay estuary through scientific and educational programs.

### Administrative and Development Staff

|                           |                |                |
|---------------------------|----------------|----------------|
| Peter A. Clark, President | Rachel Arndt   | Michelle Yopez |
| Michelle Andersen         | Leanna Jackson | Rachel Zafar   |
| John Anderson             | Tiana Kirby    | Jon Ziegler    |
| Pamela Arbisi             | Jill Kunesh    |                |
| Nina Ardle                | Jamey Miller   |                |

### Discovery Center Staff

Dwayne Virgint

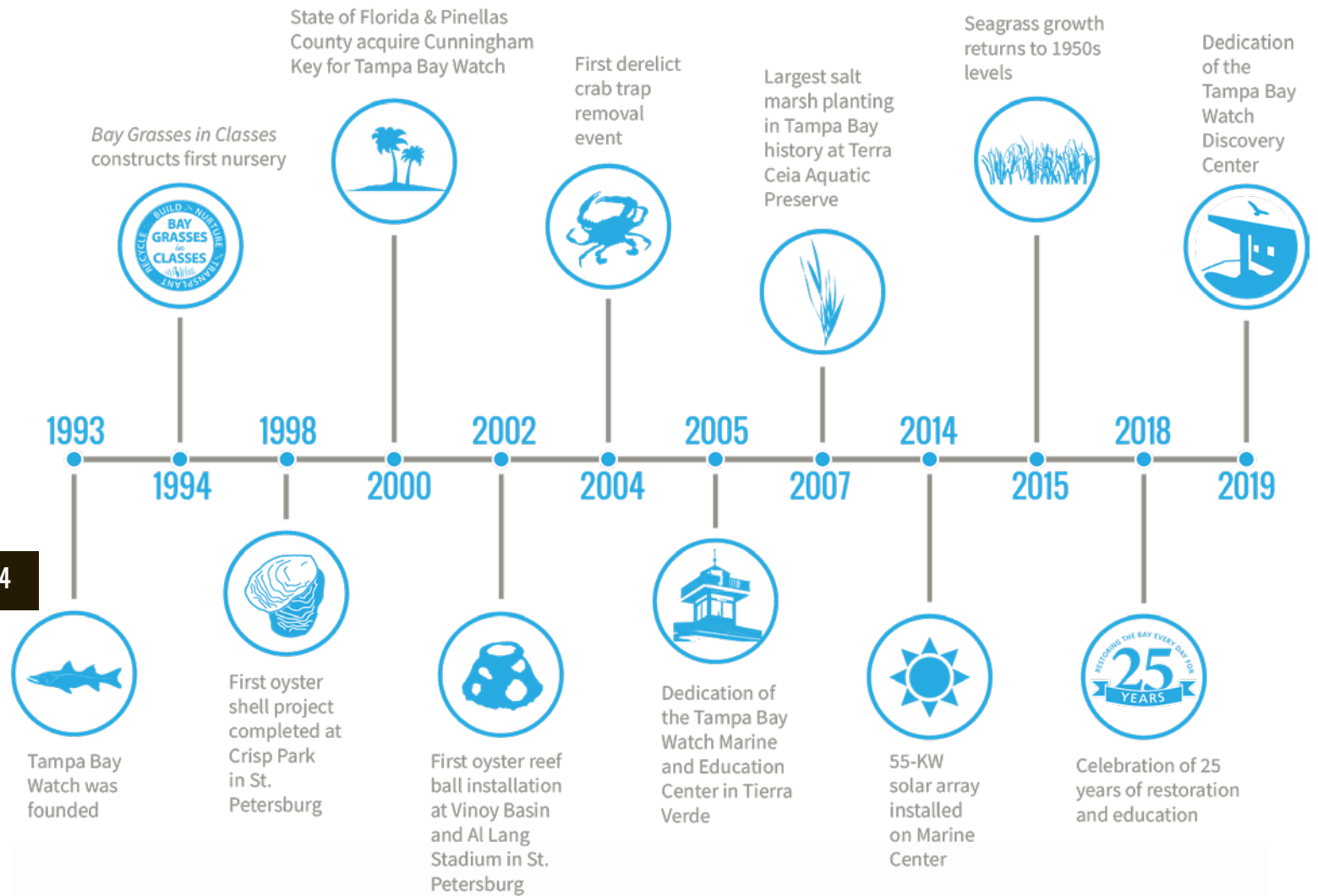
### Restoration and Education Staff

|                  |                   |                  |
|------------------|-------------------|------------------|
| Jordan Findley   | Samantha Johnston | Eric Plage       |
| Matt Flynn       | Andy Lykens       | Amy Rothenhoefer |
| Melanie Grillone | Katie Mastenbrook | Melinda Spall    |
| Serra Herndon    | Audrey Mitchell   |                  |

### Board of Directors

|                                      |                   |               |
|--------------------------------------|-------------------|---------------|
| Mary Ann Renfrow, Chair              | Matthew S. Bisset | Travis Parker |
| Mark Chmielewski, Vice-Chair         | Derek Houston     | Steve Stanley |
| Doug Sokolowski, Treasurer/Secretary | Lari Johnson      | Larry Weiner  |
|                                      | Kevin Kelso       | Mike Wilson   |
|                                      | Debbie Kraujalis  |               |

# The History of Tampa Bay Watch







# Letter from the President

## Restoration, Education, and Expansion

This year was certainly a busy one as our staff and Board of Directors worked double-time in order to prepare for the opening of the Tampa Bay Watch Discovery Center at the new St. Pete Pier while continuing to run our hands-on habitat restoration and environmental education programs.

Our staff took part in several workshops and brainstorming sessions in order to design interactive and engaging exhibits for the Discovery Center. In addition to our Discovery Center Capital Campaign, a new Founding Membership program was developed to support our capacity to grow program and operational opportunities. Among significant milestones, the dedication of the Discovery Center was celebrated on April 2 in appreciation of our generous sponsors, including the Milkey Family Foundation, who is the naming sponsor.

At the same time, our staff worked diligently to implement our restoration and education programs. The science staff wrapped up a significant three-year oyster reef project at McKay Bay. We expanded citizen science efforts by offering Florida Microplastics Awareness Projects workshops and hosted our first Vertical

Oyster Garden building project. It was the most successful year of the monofilament fishing line program with 836 miles of line recycled!

We applaud all of our members, partners, and supporters for all that you do to help move Tampa Bay Watch's environmental initiatives forward as we begin the next chapter of our organization by opening the Discovery Center. I would like to thank the entire community for supporting the restoration of the bay every day. Each volunteer, member, partner, and sponsor truly does make a difference and plays a key role in the important work that we do at Tampa Bay Watch. Thank you, all!

Sincerely,

Peter A. Clark  
President and Founder





## Coming Together for the Discovery Center

Thank you to our generous sponsors and partners who made possible this exciting new chapter for our organization!  
 Congratulations to everyone who worked so hard to make the Tampa Bay Watch Discovery Center a reality.

### Discovery Center Presenting Sponsors

Milkey Family Foundation  
 Official Tourism Sponsor:  
 Visit St. PeteClearwater  
 Exhibit Gallery Sponsor  
 Terry and Ginny McCarthy  
 Eco-Vessel Sponsor  
 The Spurlino Foundation

### Leadership Gifts

City of St. Petersburg  
 Pinellas Community  
 Visionaries W.A. "Bill"  
 Waters, Jr. and Alain A. Cerf  
 Francis and Gertrude Levett  
 Foundation  
 Rays Baseball Foundation  
 and Rowdies Soccer Fund  
 Anonymous  
 George and Isabel Adams  
 George and Debbie Baxter  
 Beltz Family Foundation  
 Bonefish Grill

Mark Chmielewski and Linda  
 Jantschek  
 Randal and Sharon Cochrane  
 Margaret E. Dickins  
 Foundation  
 Duke Energy Foundation  
 General Dynamics  
 Joan and Dick Jacobs  
 Endowment  
 Kevin and Amy Kelso  
 In Memory: Frank and Alice  
 Lay, Who Loved Tampa Bay  
 The Moser Family  
 Harry and Beverly Nicklaus  
 Margaret and David Perry  
 Foundation  
 Joe and Robin Reed  
 The Risser Family  
 Drs. Eli and Janet Marley-  
 Rose  
 Abigail Seldin and Whitney  
 Haring-Smith  
 The Sokolowski Family  
 Fred and Carol Whaley  
 Ken and Vicki Wilson  
 The Woodnote Foundation

### Discovery Center Founding Members

Joe and Nancy Adams  
 Amuni Financial, Inc.  
 Michael, Pamela, and Adam  
 Arbisi  
 Jennifer and Lowry Baldwin  
 Biltmore Construction  
 Carbiener Family Charitable  
 Fund  
 Catalina Marketing  
 Charitable Foundation  
 Helen, Max and Rudy  
 Consoni  
 Pete and Sharon Dagostino  
 Dream Big Fund  
 Larry and Emily Fasan  
 Frank E. Duckwall  
 Foundation  
 Scott and Natalie Gebicke  
 Guy Harvey Ocean  
 Foundation  
 Kathy and Roger Herrnsteen  
 Kathryn Howd and Edward  
 Rucks

Court and April James  
 Greg and Dianne Johansen  
 Garner and Connie Koons  
 Charles and Laurie Lowe  
 Mahaffey Family Foundation  
 Jacob and Deborah Mast  
 Terry and Ginny McCarthy  
 McNeel Family Fund  
 Kim and Chris Moench  
 Mary Ann and R. Gary  
 Renfrow  
 Sabal Trust  
 Kathy and Joe Saunders  
 The Saunders Foundation  
 Bert and Margaret Smith  
 St. Petersburg Audubon  
 Society  
 Brian and Belinda Sullivan  
 TSE Industries / Klingel  
 Family Foundation  
 Mr. Chip Webster and Dr.  
 Debra Doud  
 Larry Weiner and Yvonne  
 Grimm  
 Rosemarie Williams  
 Mike and Rita Wilson



# Discovery Center

## Taking Learning to a New Level at the St. Pete Pier in 2020

Located halfway down the new St Pete Pier's over-water walkway, the Tampa Bay Watch Discovery Center will open in summer of 2020. The Exhibit Gallery will tell the story of Tampa Bay and share the history and recovery of this unique ecosystem, and the role of Tampa Bay Watch, to visitors from around the corner and around the world. The focal point of the Exhibit Gallery is a centerpiece aquarium that showcases many of the species found in our local waters. There will also be a touch tank, interactive displays, video presentations, and docent-led tours which will combine for an unforgettable experience and a newfound respect for our local environment.

The official name of the building will be the Tampa Bay Watch Discovery Center presented by the Milkey Family Foundation, which will honor the \$1 million donation by Kevin and Jeanne Milkey. As Mr. Milkey stated during the Discovery Center Dedication and Appreciation Day on April 2, "We really support [Tampa Bay Watch's] mission of protecting and restoring Tampa Bay waterways and the education programs that [they] provide. Jeanne and I are passionate about protecting the environment. I think that the way we need to do that—and Tampa Bay Watch is doing that—is through education."

Duke Energy Foundation presented a check of \$100,000 to Tampa Bay Watch to support a multi-level habitat restoration program that will be showcased in the Tampa Bay Watch Discovery Center at the new St. Petersburg Pier. Funds will also help construct a living shoreline exhibit where children and adults can use a touch-screen platform to build a living shoreline habitat.







## A New Kind of Gardening: Vertical Oyster Gardens (VOGs)

**Innovative technique will improve water quality in urbanized settings**

Our first VOG-building project brought community volunteers together in June to build 1,150 VOGs in just 2.5 hours. Busy hands worked to string oyster shells—recycled from local restaurants—onto rope.

“500 VOGs will be suspended from docks at Gulfport Marina to create a hard substrate where juvenile oysters can attach and develop. Water quality measurements will be taken just before installation, then trained citizen volunteers will again measure at six- and twelve-month points,” said Eric Plage, Tampa Bay Watch Environmental Specialist. The data collected during the first year will be shared with Tampa Bay Watch as part of our ongoing research.

VOGs can last for several years and do not require special permitting. Each 3-foot long VOG encourages from 50 to 100 juvenile oysters to attach, where they can grow to adulthood.

Oysters provide multiple benefits to the bay. They are a food source for birds and fish. Many small fish, crabs, shrimp, and other critters live among oysters, providing food for large fish and wildlife. Oyster habitats are a great place to catch fish. Most importantly, oysters are natural filters, cleaning an average of 2-5 gallons of water an hour. More oysters mean a cleaner bay!



# How we Restored Tampa Bay in 2019



## Oyster Shell Bars

Improving water quality by reducing shoreline erosion and promoting oyster habitats.



**583** volunteers

**219** tons of fossilized shell

**12,676** square feet of new reef



## Oyster Reef Balls

Stabilizing shorelines, providing hard bottom habitats for fish and wildlife resources, and promoting water quality improvements.



**482** volunteers

**553** reef balls built

**500** reef balls installed

**320** feet of new reef created



## Great Bay Scallop Search

A fun community participation program with the goal to record the status of the local bay scallop population.



**127** volunteers

**51** scallops recorded



## Fishing Line Recycling

Helping protect wildlife from unnecessary injury or death. Volunteers also monitor and collect fishing line for recycling.



**74** volunteers

**836** miles of line recycled

**195** collection tubes

**69** locations



## Coastal Cleanups

Protecting marine creatures and humans from trash and marine debris that floats onto the shorelines.



**410** volunteers

**5,200** pounds of debris removed



## Derelict Crab Trap Removal

Removing abandoned traps that entrap and entangle marine creatures, as well as create boating safety hazards.



**36** airboats

**82** volunteers

**202** derelict crab traps removed



# Bay Education for All

## Inspiring knowledge with experience—for all Tampa Bay youth

Estuary EDventures teaches about the importance of the Tampa Bay estuary in daily life and about manmade and natural impacts on the estuary, as well as what can be done to restore the health of our local estuary.

It is our hope to instill in all students who participate in our field trips a genuine love and respect for Tampa Bay and the multitude of species that call it home.

In 2019, 46% of the field trips facilitated at Tampa Bay Watch were with schools that are designated Title I School or who are deemed academically at-risk. We continue to strive to provide free educational field trip opportunities for low socio-economic school groups in the Tampa Bay area.

Many school-aged children from financially disadvantaged households in the Tampa Bay area have never been on a boat or seen the beach.

We believe it is essential to continue to provide high-quality field trip opportunities for the Tampa Bay region—even to those schools and families who cannot afford to pay field trip fees. Every child should be able to experience the beauty and productivity of Tampa Bay, regardless of their family's economic status.





# Teaching Tampa Bay in 2019



## Summer Camps

Our Estuary EDventures day-camp program gives kids the opportunity to explore the estuary by snorkel, kayak, and boat.



**228** campers attended

**40** days of camp

**20** scholarships provided



## Field Trips

Giving kids an up-close and personal experience with the interconnectedness of water quality, habitats, and the food web in the estuary and ocean.



**3,403** students attended

**692** educators

**101** school field trips



## Bay Grasses in Classes

Our school-based native plant nursery program fosters a sense of stewardship by students who grow a source of native wetland plants for use in restoration projects.



**1,4255** students

**13** participating schools

**5,550** native grasses transplanted



## Citizen Science

Interactive workshops which give students and volunteers the opportunity to collect scientific data to contribute to worldwide projects on seahorses, microplastics, and water quality.



**364** students and **60** educators recorded viable data for the iSeahorse citizen project, catching and measuring **45+** seahorses.

**20** volunteers and **273** students gathered **29** litter samples, contributing data to the Florida Microplastic Awareness Project.

**85** students participated in Philippe Cousteau's EarthEcho Water Challenge by collecting and testing local water parameters.



Fundraising:

# Tampa Bay Watch Tarpon Rodeo

## 14<sup>th</sup> Annual Tarpon Rodeo, Honoring Ed Alber

The 14th Annual Tarpon Rodeo raised \$120,000+ for our education and restoration programs.

With 24 teams, a record 23 tarpon were caught and released successfully in the tournament on May 31, 2019.

As proud partners with Tampa Bay Watch, we are thrilled that Team Bonefish Grill won first prize with Captain Jared Simonetti.

We introduced mobile bidding for the first time with a goal to cut down on paper waste and increase participation in Tarpon Rodeo's Castaway Soirée auction at the beautiful TradeWinds Island Resort.

Thank you to all our sponsors, donors, volunteers and guests that supported Tarpon Rodeo and Castaway Soirée!



12



**DirectedCapital**



**GENERAL DYNAMICS**  
Ordnance and Tactical Systems



**KONICA MINOLTA**



Scooter Foundation



**HANCOCK  
WHITNEY**



**MIKE & RITA WILSON**

**MIKE & BOB SIERRA  
FAMILY FOUNDATION**



**FLORIDA STATE FENCE**



**FB  
FREEDOM BANK**



**WHALEY FAMILY TEAM**



**LARRY WEINER &  
YVONNE GRIMM**





Fundraising:

# Evening for the Bay

13<sup>th</sup> Annual Event presented by Progressive Insurance

Tampa Bay Watch and Progressive Insurance thank the guests and supporters who helped make the 13<sup>th</sup> Annual Evening for the Bay, on November 7, 2019, the most exciting year on record!

As each guest stepped onto the red carpet, they were greeted with the sights and sounds of a bustling Vegas scene tucked into the hidden gem of the Tampa Bay Watch Marine and Education Center. Bonefish Grill and TradeWinds Island Resorts delighted with fine buffet stations while specialty cocktails flowed, thanks to

Cooper's Hawk Winery, Great Bay Distributors, Kozuba & Sons Distillery, and Old St. Pete.

The Tampa Bay Yacht Management High Roller's Casino was alive with supporters who tossed the dice for coastal restoration and friends gathering around tables overlooking the bay to be enchanted by the tunes of Frank Sinatra. Expansive silent and live auctions were the highlight of the evening with over \$145,000 being raised for the mission of Tampa Bay Watch!

13

PRESENTED BY:

**PROGRESSIVE**  
*HOME*

DINNER SPONSOR:



BEVERAGE SPONSORS:

AUCTION SPONSOR:



CASINO SPONSOR:



VIP SPEAKEASY SPONSOR:



COMFORT SPONSOR:



SUSTAINABILITY SPONSOR:



ADDITIONAL EVENT SPONSORS:



CHMIELEWSKI  
FAMILY

JIM PARENT  
& PARTY

LARI & CHARLIE  
JOHNSON

LARRY & YVONNE  
WEINER

MIKE & RITA  
WILSON



## Tampa Bay Watch Crew Enjoy a Backstage Pass at Busch Gardens

Tampa Bay Watch staff was treated to a special behind-the-scenes tour of Busch Gardens around the holidays. Highlights of the day included meeting the resident elephants and kangaroos, experiencing a safari to feed giraffes, and touring the animal hospital and nutritional center.

SeaWorld Busch Gardens Conservation Fund has been a long-term supporter of Tampa Bay Watch by funding our annual Scallop Search and marine debris programs. Additionally, many of Busch Gardens staff participate as volunteers at our restoration projects.

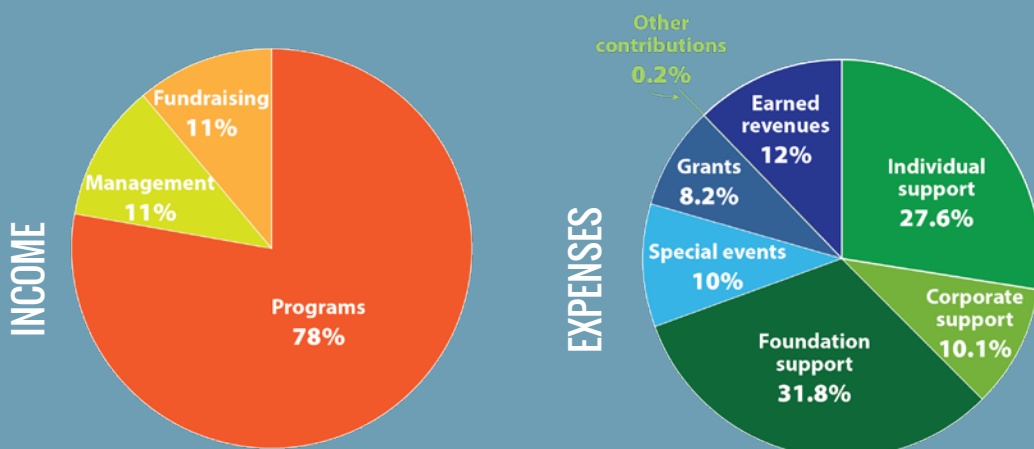


14

## 2019 Financial Summary

Tampa Bay Watch's 20 full-time staff members seek to fulfill its mission through habitat restoration programs relying on volunteer support and youth education each year with field trips and summer camps.

Tampa Bay Watch significantly increased its annual budget to \$2.6 million through fundraising efforts to prepare for the opening of the new Discovery Center on the St. Pete Pier.



## 2019 GuideStar Seal of Transparency

Tampa Bay Watch is proud to be acknowledged as a platinum organization by GuideStar, the world's largest source of nonprofit information.

We've earned the platinum seal of approval for sharing our full and complete story with the world, including quantitative metrics; in-depth financial information; strategies, and progress toward our mission on [guidestar.org](https://guidestar.org).





# Volunteerism: Digging in for a Better Bay

## Who do we appreciate? Our VOLUNTEERS!

Tampa Bay Watch hosted our 8<sup>th</sup> annual Volunteer Appreciation Dinner on March 29 in an effort to express our gratitude to everyone who supports our habitat restoration projects, education programs, community outreach events, and fundraisers throughout the year. Around 100 active volunteers were in attendance—all of whom enjoyed dinner, a free raffle, some volunteer camaraderie, and a beautiful sunset.



Congratulations to our volunteers of the year: Frank Gallant, David Price, and Jenna & Gail Davenport.

*TBW staff congratulate volunteer Frank Gallant for his lifetime achievement award*

## 2019 Volunteer Statistics

We survey our volunteers to maximize our communication effectiveness and to ensure the happiness of our volunteer partners!

**94%** feel prepared for the project based on our reminders

**99%** anticipate volunteering again

**94%** feel welcomed and appreciated at the project



# 2019 Bay Guardians

The Tampa Bay Guardians support our mission to restore and protect the bay with a three-year pledge of at least \$1,000 annually.



## Stewards

(\$5,000 - \$9,999 annually)

Eric Hull & Bryan Baldwin

## Advocates

(\$2,500 - \$4,999 annually)

Bobby & Elena Bussey

Jeff and Linda Carbiener

Frank and Dana Dalton

Christopher French

Firat Gezen

James T. Pascia, DDS

Mary Ann & Gary Renfrow

## Leaders

(\$1,000 - \$2,499 annually)

Pat & Paul Brown

Peter & Sharon Dagostino

Dr. Bill Heller

Kathryn Boeckman Howd

Janet & Harold Hurwitz

Craig Jordan & Elaine Koziar-Jordan

Steve & Mary Stanley

Bill & Dyreese Sweeney

Mike & Rita Wilson

## Bay Guardians Bobby and Elena Bussey

Bobby and Elena Bussey have been active members of Tampa Bay Watch for over ten years. They show their support by actively volunteering to represent us at community outreach events, attending our fundraisers, and being Tampa Bay Guardians. Bobby expresses why they have chosen to support Tampa Bay Watch: "As St. Petersburg natives, Elena and I grew up enjoying Tampa Bay. Tampa Bay Watch is a dedicated local organization dedicated to preserving and improving our waters. They allow us to return what for so many years we took for granted."



# 2019 Legacy Society

The Tampa Bay Watch Legacy Society recognizes those who have included Tampa Bay Watch in their will or estate plans to help ensure a healthy bay for generations.

Through a provision in your will, you can make a simple yet significant gift that will provide for the future of Tampa Bay Watch's work to protect and restore the Tampa Bay estuary and create a lasting legacy of your interest.

Legacy gifts to Tampa Bay Watch help us to achieve long-term financial stability and sustainability.

## 2019 Legacy Society members:

Anonymous donor

Peter & Marion Clark

Al Donn & Dorothy Holle

Stephanie Green

Joan & Dick Jacobs

Donald James Lyons

Captain Steve McCreary

Drs. Eli and Janet Marley Rose





## Rays and Jabil go to bat for bay restoration and education!

We are extremely grateful to the Tampa Bay Rays and Jabil for supporting bay restoration and education!

Tampa Bay Watch was presented with a generous \$15,000 check to support our mission at the Rays game on April 20, 2019 in honor of Earth Day and in celebration of our partnership.



Pictured from left: **Jennifer Tran**, Vice President of Tampa Bay Rays Human Resources & Organizational Engagement; **Stephen Thomas**, Executive Director of Rays Baseball Foundation; **Bill Wiener Jr.**, Vice President of Tampa Bay Rays Employee and Community Development; **Andrew Gallo**, Jabil Global Communications Program Manager; **Peter Clark**, Tampa Bay Watch President; **Kevin Milkey**, Milkey Family Foundation; **Pamela Arbisi**, former Tampa Bay Watch Director of Development; **Marion Clark**, Tampa Bay Watch; and **Jeanne Milkey**, Milkey Family Foundation.

# 2019 Corporate Members

Tampa Bay Watch Corporate Members are active partners working to protect and restore the Tampa Bay estuary. Our unique estuarine environment helps drive the local economy, provides habitat for a variety of important wildlife, and is a primary factor in the quality of life for the region. Corporate Members help make Tampa Bay a healthier, more desirable place to work and play. They also influence and support the education of thousands of young people, teaching them the importance of environmental stewardship.

400 Beach Seafood & Tap House  
Alden Suites  
American Strategic Insurance  
Amuni Financial, Inc  
Argos USA LLC  
ARS Wealth Advisors  
Baldwin Krystyn Sherman  
Partners  
Bloomin' Brands  
Catalina Marketing  
COMANCO Environmental Corp  
Cooper's Hawk Winery  
Coppertail Brewing Company  
Courtesy Valet  
Covanta  
Directed Capital  
Diversified Telecom Services, Inc.  
Don Cesar  
Electric Supply, Inc.  
Elite Watersports  
FairWarning  
Ferman Auto  
Florida Info Guide  
Florida Pure Sea Salt  
General Dynamics  
Go Black Fin  
Great Bay Distributors  
Greenacre Properties, Inc.  
Gulfeagle Supply  
Healthcare IQ  
J.L. Marine/Power Pole  
Jabil  
Kahuna's  
Kahwa Coffee  
Kennedy Investments / DAK  
Corporation  
Konica Minolta

Latitudes  
Lewis, Longman & Walker  
Limelight Photography  
Maximo Marina  
McNichols Company  
Mosaic  
Mullen Corporation  
Paradigm Learning  
Paradise News  
Pascia & Pascia Dentistry  
Paul J. Skipper Inc  
Reef Innovations, Inc.  
Resort Realty  
Sabal Trust  
Salt Pines  
Sand Dunes Beach Services  
Saunders & Walker, P.A  
Scotts  
Sourcetoad  
Southpoint Financial Services  
St. Petersburg Distillery  
Suncoast Watersports  
Tampa Bay Parrot Heads  
Tampa Bay Pilots Association  
Tampa Bay Rays  
Tampa Bay Yacht Management  
TECO Energy  
Tennant Special Risk  
TJM Property Management  
Tradewinds  
TruGreen Commercial  
Wilcox Nursery & Landscape  
Wiss  
WRB Enterprises

We apologize for any accidental omissions from this list. Thank you for your support!





# 2019 Donors and Contributors

## \$50,000+

Bloomin' Brands  
Bud & Fran Risser  
Cindy Fletcher  
Duke Energy Foundation  
George and Debbie Baxter  
Milkey Family Foundation  
Mosaic  
Rays Baseball Foundation  
Spurlino Foundation  
The Francis and Gertrude Levett Foundation

## \$25,000 - \$49,999

Abigail Seldin & Whitney Haring-Smith  
Anonymous  
Friends of the Tampa Bay National Wildlife Refuges  
General Dynamics  
Joyce and Larry Beltz  
Randy & Sharon Cochrane

## \$10,000 - \$24,999

American Strategic Insurance  
Bert Smith Oldsmobile  
Catalina Marketing Charitable Foundation  
Clayton and Mary McNeel  
Courtland James  
Deborah & Jacob Mast  
Dr. Steven and Ashley Lay  
Fred & Carol Whaley  
Garner Koons  
Guy Harvey Ocean Foundation  
Helen & Rudy Consoni  
Jabil  
Jeff and Linda Carbiener  
Joan & Dick Jacobs  
Joe Saunders  
John Moser Trust  
Kenneth and Vicki Wilson  
Larry Fasan  
Lawrence Weiner & Yvonne Grimm  
Lynn Larsen  
Mahaffey Family Foundation  
Margaret and David Perry Foundation  
Margaret E. Dickins Foundation  
Mark Chmielewski & Linda Jantschek  
Mike & Rita Wilson  
Nicklaus of Florida, Inc.  
Restore America's Estuaries Program  
Rob Klingel, Sr.  
Rosemarie Williams  
Sabal Trust  
St. Petersburg Audubon Society  
Suntrust Foundation  
Tampa Bay MS & Tampa Port Ministries Inc.  
The Woodnote Foundation

## \$5,000 - \$9,999

Amuni Financial, Inc.  
Board of County Commissioners  
Bobby and Elena Bussey  
Charles Webster  
Dianne Johansen  
Directed Capital Resources, LLC  
Elite Watersports  
Frank E. Duckwall Foundation  
Great Bay Distributors  
Kevin and Amy Kelso  
Kevin R. Milkey  
Mary Ann & Gary Renfrow  
Robert & Claudia Sokolowski  
Robert S. and Mildred M. Baynard Charitable Trust  
Rochester Area Community Foundation  
The Boeckman Family Foundation  
The Focardi-Great Bay Foundation Charitable Trust  
TradeWinds Island Resorts  
Wells Fargo Foundation  
William Apple

## \$2,500 - \$4,999

Bailey Family Foundation  
Baldwin Krystyn Sherman Partners  
Bill and Cynthia Smoot Weller  
Biltmore Construction Co., Inc.  
Brian Zmich  
Captain Terry Russo  
Christopher French  
Covanta  
Elaine Koziar-Jordan & Craig Jordan  
Erica and Johnson Clark  
Erik Lieberman  
FairWarning  
Ferman Community Advancement Fund  
Frank & Dana Dalton  
Frank Gallant  
Freedom Bank  
Ginni Truglio  
Go To Steves Family Foundation  
Greenacre Properties, Inc.  
Hancock Whitney  
James & Karen Lobianco  
James T. Pascia, DDS  
Jim & Leslie Parent  
Jim Kennedy  
Jim Morrison  
Laura Jenkins  
Lenny Englander  
Matt Bisset  
Michael and Carolina Holtz  
Natalie and Scott Gebicke  
REVERB  
Rody Timmons  
Shutts and Bowen, LLP  
Steven Askin  
Susie Venters

Tampa Bay Pilots Association  
Tampa Bay Yacht Management  
Tennant Special Risk, Inc  
Thomas Frankfurth

## \$1,000 - \$2,499

400 Beach Seafood & Tap House  
Alan Mossberg  
Alden Suites  
AquaWorx, Inc.  
Argos USA LLC  
ARS Wealth Advisors  
Betsy & Bo Godbold  
Bob Francis  
Carol & George Ramsayer  
Charles & Laurie Lowe  
Charles and Kathryn Cauthen  
Cheryl Ann McDonnell  
Christopher and Celeste Hunter  
Coastal Properties Group Int'l LLC  
Cyndi & David Dawson  
David & Carol Sjolund  
Dennis Demirjian  
Dewald Gouws  
Don CeSar Hotel  
Doug and Cindy White  
Douglas & Joellen Sokolowski  
Drs. Edwin and Dorothy Sved  
Ed and Jeanne Mansfield  
Eileen Grove  
Electric Supply Inc.  
Eli and Janet Rose  
Eric D. Peterson  
Eric Hull & Bryan Baldwin  
Florida Pure Sea Salt  
George & Isabel Adams Jr  
Gloria Sterling  
Greater Horizons  
Greg Archambault and Anita Adams  
J.L. Marine Systems  
J.R. Sierra  
Jackson and Robyn Bowman  
James Scott Allen  
Jane & Jamie Egasti  
Janet & Harold Hurwitz  
Jeff & Jodi Harkavy  
Jennifer M. Burns, M.D.  
Jeremy Brongo  
Jim and Lavinia Stenbridge  
Joel Godwin  
Jon and Michelle Kieffer  
Kathryn Boeckman Howd  
Kelley J Fowler  
Kelly McDonnell  
Kim & Steve Limer  
Lari Johnson  
LEE D EDWARDS  
Leesa Moore  
Lewis Longman & Walker  
Lindsay Cross  
Liz Heinkel

# 2019 Donors and Contributors (continued)

Lynn Broadhurst  
 Mark & Dawn Schwirtz  
 Mary & Bob Sierra Family Foundation  
 McGriff Insurance  
 McNichols Company  
 Mel Rollins  
 Michael and Amy Neeb  
 Michael and Debbi Young  
 Mr. & Mrs. Fred Razook  
 Mullen Corporation  
 Network For Good  
 Oded Nechushtan  
 Pascia & Pascia Dentistry  
 Pass A Grille Marina  
 Pat & Paul Brown  
 Patricia & James Ostrosky  
 Patricia Cucchiara  
 Patrick & Toni Walsh  
 Paul J. Skipper Inc.  
 Pete & Sharon Dagostino  
 Progressive Insurance Foundation  
 Quicksilver Recycling Services  
 RBC Capital Markets  
 Republic Bank  
 Resort Realty  
 Richard F. & Lori Lynen  
 Rick Van Enige  
 Robert & Virginia Fischer  
 Robert Czysszczon  
 Roland & Diane Lajoie  
 Rotary Club of Tampa Bay Foundation Inc.  
 RSM US LLP  
 Sally Flynn  
 Sand Dunes Beach Services  
 Saunders & Walker P.A.  
 Sourcetoad  
 Stephen Showalter  
 Steve & Mary Stanley  
 Suncoast Watersports  
 Tampa Bay Beaches Chamber of Commerce  
 Tampa Bay Parrot Heads In Paradise Club  
 Tampa Bay Rays  
 Tampa Orlando Pinellas Jewish Foundation  
 The AYCO Company L.P.  
 The Florida InfoGuide  
 The Hickey Family Foundation  
 Timothy & Marcia Wise  
 Tina Fischer  
 TJM Properties, Inc.  
 Travis Parker  
 W.R.B. Enterprises  
 Wallace Welch & Willingham  
 West Marine BlueFuture Fund  
 William & Dyreese Sweeney  
 William C Ballard  
 YourCause

## \$500 - \$999

A.J. Arango, Inc  
 Alan Donn and Dorothy Holle  
 Angelo & Paige Catani  
 Anita & Mark Gibbons  
 Armature Works Bar  
 Bank of America Matching Gifts  
 Barbara Ann Busch  
 Bill & Sue Castleman  
 Bill Hoyt  
 Bill Wanless  
 Bonnie & Steve Taiman  
 Bragg & Tina Crane  
 Brian and Marne Kelleher  
 Bridget K. Lyons  
 Canoe Country Outfitters  
 Carolyn Gambuti  
 Cheri Brenner  
 Chris Wehr  
 Dav Mosby  
 Dave Pratt  
 David & Fran Huey  
 David Tritsch  
 Donna and Shelby Anderson  
 Doreen Moore  
 Doug & Anne Corey  
 Dr. Robert Kropp  
 Drift Local  
 Eagle Audubon Society, Inc.  
 Gaby Gramling  
 Gil Gibson  
 GMS Inc.  
 Husch Blackwell  
 Janet & Iqbal Paroo  
 Jeff Hearn  
 Joe Schwartz  
 John and Beth O'Shea  
 Jolanta Olbrys  
 Jon Broadbent  
 Julian Wood, Jr  
 Kelly Quinn  
 Kristin Asbury  
 Len & Cindy LoVullo  
 Lisa & Mac Barrow  
 Lisa Iacovino  
 Lorin & Patty Bridge  
 Lynne Donahoe  
 Marc McCabe  
 Marie and Richard Riley  
 Mark & Marianne Mahaffey  
 Mark A Cook Charitable Fund  
 Martin & Nancy Koch  
 Matthew Faulhaber  
 Michael & Carol Spall  
 Michael Menszycki  
 Miles Partnership  
 Naomi and Jon Vichich  
 Norman Englert  
 Patricia Wojtowicz

Patrick & Karen Chase  
 Patrick Manzella  
 Peter & Susan Plage  
 Professor Green Thumb, Inc.  
 Richard and Brenda Hitt  
 Richard and Linda Brown  
 Rick C Gorsira  
 Ryan Maroo  
 Scott and Donna Igler  
 St. Petersburg Area Chamber of Commerce  
 Steven Wartman  
 Susie Bolton  
 Tanya & Peder Fjare  
 The Benevity Community Impact Fund  
 The D-10 Society  
 Theodore J. Schmidt  
 Tim & Maureen Nelson  
 Tom and Sally Baynard  
 UF Leadership and Education Foundation  
 Verizon Foundation  
 Wendy Oliverio  
 William Breden and Deborah Eagan  
 William Hoyt

## \$100 - \$499

Academy of the Holy Names of Florida Inc.  
 Admer Gibson  
 Aixa Santiago  
 AJ & Kirk Faryniasz  
 Al and Antoinette Corey  
 Al and Sandee Steinberg  
 Alexion Pharmaceuticals  
 Alice & Cooper Petagna  
 Alison Doyle  
 Allen Loyd  
 Alyson Gondek  
 Alyssa Meyer  
 Amanda & Derek Houston  
 Andrew Joseph  
 Andrew Smith  
 Andy & Karen Ritter  
 Andy Simon & Leslie Wilkins  
 Angela and Nathan Allison  
 Angela M. DeBlaey  
 Anita Camacho  
 Anje & Tim Bogott  
 Ann & Jeffrey Winkler  
 Annamaria Taraszki  
 Annette & Jerome Baesel  
 Anonymous  
 Ariane Ruprai  
 Armelle and Hermann Keppler  
 Arthur & Sallie Swisher  
 Arthur Rogovin & Marlene Rudder-Rogovin  
 Astrid Henriques  
 AT&T  
 August and Annalisa Roehrig  
 Barb Beyhl



# 2019 Donors and Contributors (continued)

Barbara & Doug Duch  
Barbara & Gary Hornbuckle  
Basilio Wild  
Beth Connor  
Beth Frierson  
Betsey and Gerry Stupiansky  
Betsy and Joe Judge  
Betty and Gary Grimmell  
Betty Doo  
Bill & Barbara Hajko  
Bill and Penny Campbell  
Bill Blonkowski  
Bill Chamberlain  
Bill Renc  
Bill Ward  
Bob & Marianne Vitito  
Bob Gunter  
Bob Haiman  
Bob Harris  
Bob Lenz  
Bonnie & Paul Hargrett  
Brett and Rhonda Hendee  
Brian & Celeste Noren  
Bruce Proud  
Bruck Family Foundation, Inc.  
Candy Bishop  
Carla and Kent Garbin  
Carlos Frey  
Carol Hollenbeck  
Carol Marks  
Carole McIvor  
Carole W. Merritt  
Caroline Dorsey  
Carolyn & Mike Richards  
Cassandra Allen  
Cate Grund  
Catherine McGarry  
Catherine Minter  
Cathy & Jim Leonard  
Cathy and Tom Goldman  
Charles & Nancy Frazier  
Charles & Trudi Tommelleo  
Charles Claar  
Charles Koehler  
Charles R. & Karen Crume  
Charlie Schafer  
Chelsea R Cellamare  
Cheryl & Kevin Staley  
Chris Cargo & Ted Andresen  
Chris Fielding  
Christina Morris  
Christine Agee  
Christine Major Hicks  
Christine Stockholm  
Chuck & Sue Chrzan  
Cindy & Larry Hollis  
Cindy Dickmyer  
Cole Powell  
Constance DuBois  
Craig Pethe

Craig Sas  
Dale T Wilson  
Damien Specht  
Dan & Elaine DiLoreto  
Dan & Virginia Harter  
Dan and Christine Fisher  
Dan Benson  
Dan Feeley  
Dan Lowry  
Dan Paul  
Dana Welshans  
Dane & Cindy Petersen  
Daniel Snyder  
Danya Godoy  
Darcey Phillips  
Darcie A Salvant  
Dave & Barbara Howard  
David & Julie Holkeboer  
David & Elke Lubin  
David & Linda Busch  
David & Megan Roller  
David Baxter  
David Fanciullacci  
David Hall  
David Jenkins  
David Jones  
David Olesky  
David Osborn  
David Piper  
David Provencher  
David Ramsey  
David Veiner  
Dawson K. and Mary McKeown  
Dean Jollay  
Deanna Hedges  
Debbie White  
Debora Rumberger  
Deborah and Eric Stickels  
Deborah Kraujalis & Doug Williamson  
Dennis and Jenny Martin  
Dennis Kellenberger  
Dennis Murphy  
Dennis Pevarski  
Diana Skogseth  
Diane Dewey & Peter Baenninger  
Diane Ewing  
Dianna Grimm  
Don & Linda Roberts  
Donald Harris  
Donald James Lyons  
Donna and Thomas Gaffney  
Donna Lipson  
Doris S. Deter  
Doug & Charki Schafer  
Doug & Pamela Mayer  
Douglas and Staci Williams  
Douglas Tobiassen  
Doyle Wealth Management  
Dr. Andrew Massaro  
Earthshare

Ed & Betty Shamas  
Ed Mello  
Ed Miyagishima  
Edgewood Intermediate School  
Edwin Hazelhurst  
Elena Dawson  
Elizabeth (Betsy) Reynolds  
Elizabeth Teira  
Ellen Helgeson  
Ellen Sanpere  
Emily Schmoll  
Eric & Beth Diner  
Eric Dennis  
Eric Fisher  
Eric Grzybowski  
Eric Wallens  
Erik Hoffman  
Fat Beet Productions, LLC  
Frank & Patricia Lanza  
Frank Dubisz  
Fred Hemmer  
Fuller Bazer  
Gail Haslett  
Gary & Anne Clark  
Gary and Kathleen Starr  
Gary and Mary Ellen Hartshorn  
Gary Raulerson  
Gene & Julia Sorbo  
George & Judith Dyer  
George & Nancy Ertz  
George and Anne Marie Verdisco  
George and Eileen Orsi  
George and Patricia Levan  
George Henderson  
Gina and Darryl Braun  
Ginger Goepper  
Glicer Colby  
Gollin Dickey Chestnut Fund  
Grant Saunders  
Gregory Barnes  
Gus LaRussa  
H. Linwood Gilbert, Jr.  
Hal Freedman & Willi Rudowsky  
Hal Landt  
Hampton & Leslie Stephens  
Harry Cunningham III  
Harry Hedges  
Heather and Marcus Oginsky  
Heather Darling  
Helen & David Feinberg  
Hellen and Walt Driggers  
Holly Greening  
Hugh and Keith Tulloch  
Hutch & Kimberly Craig  
Irina Scutaru  
Island Laser Design  
Israel and Katherine Wojnowich  
Jack & Karen Flaacke  
Jacob W. Sperber  
Jake Katulis

# 2019 Donors and Contributors (continued)

James & Carol Richardson  
James and Elena Smith  
James and Karen Eckles  
James Bennett  
James Crook  
James Glover  
James Kasper  
Jan Edenfield  
Janet Dean  
Janette Abrahams  
Jared Shapiro  
Jason & Natalie Paiva  
Jason and Brigid Anne Merenda  
Jason Flynt  
Jean Ann Blattler  
Jean Marie Treimanis  
Jeanne and Richard Townsend  
Jeff Cathey  
Jeff Francis  
Jeffrey and Lane Ritch  
Jeffrey Pace  
Jeffrey Sarver Ritch, Jr  
Jena and Michael LeBlanc  
Jenna Morgan  
Jennifer & Michael Petagna  
Jennifer Head  
Jerome W Blattner  
Jewel Elosge  
Jill Harris  
Jill Mosteller  
Jim and Leah Wilkin  
Jim and Lee Anderst  
Jim Dickson  
Jim Watters  
Joan Dance  
JoAnn Lynen  
Joanne Lentino  
Joe and Carol Lee Royer  
Joe M. & Rebecca Berton  
Joe McColl  
Joel & Pattie Aresty  
Joel Cleveland  
John & Candy Lenderman  
John & Nancy Ogden  
John & Patricia Moll  
John A Bloch  
John and Beth England  
John and Brenda Norris  
John Burke  
John Curran  
John D. Pazienza  
John Gee & Kathy Kronenberg  
John Ingram  
John LaRussa  
John Loyless  
John R Rumery  
John Strome Construction Inc  
Jolene Faught  
Jonathan Gonwa  
Joseph and Robin Reed  
Joseph T. Lettelleir

Josh Drechsel  
Joyce Ely Walker  
Judson Orrick, Esq.  
Julio and Ana Lautersztain  
Karen Baxter  
Karen Goforth  
Kari Sickling  
Karin Schneider  
Karla Kirkwood  
Karla, Craig, Ian, & Marisa Younger  
Katherine Thoburn  
Kathi Scanlon  
Kathleen Giblin  
Kathy & Roger Herrnsteen  
Kathy Lazear  
Katrina Breece  
Keith Groesbeck and Jacki Fabrizio  
Keith Matthews  
Keith Salas  
Keld Agnar & Judy Ryerson  
Kellee & David Watt  
Kember and Robert DeMott  
Ken & Joan Fink  
Kenneth Clark  
Kenneth Davis  
Kenneth P Tropf  
Keri Vizandiou  
Kerstin & George Trowbridge  
Kevin J. Smith  
Kim and Maureen Nelson  
Kim and Skip Walker  
Kim Mellen  
Kimberly M Rands  
Kirk & Dawn Johnson  
Kristin Blair  
Kurt and Jane Strasser  
Kurt Lenz  
Kyle Davidson  
Lance and Kathy Chambers  
Lance Kimball  
Larry and Pam Wilson  
Larry Binder  
Laura and Ross Dearstyne  
Laura Legarreta  
Laurie Clement  
Lawrence D. Levine  
League of Women Voters of the SPA  
Lee Dutter  
Leonard & Susan Mriscin  
Lesa Taylor  
Lesia Michelle Porter  
Leslie K. Waters  
Leslie Vetter  
Linda Mattern  
Linda Rodriguez  
Linda Southerling  
Linda Weekley  
Linda West  
Linzy Wilson  
Lisa Garcia  
Lisa Kettlestrings

Lisa Marone  
Lisa Milot  
Liz Lee Strickland  
Liz Netzler  
Loretta P. Stitt  
Lori A. Medeiros  
Louis Ambrosio  
Louise Ruggeri  
Lowe Morrison  
Lowry Baldwin  
Lucy Raulerson  
Lynn Meier  
Lynne & Cary Johnson  
Lynne Smith  
Marcia Bradwick  
Margaret Spontak  
Maria Sharon DiDio  
Marie Dufault  
Marilyn Vohs and Susan Sedlachek  
Marilyn Ward  
Mariner Car Wash  
Mark and Nancy Roualet  
Mark and PJ Deussenberry  
Mark Chisholm  
Mark Feldman  
Mark Messner  
Mark W. Lee  
Mark Wilson  
Martha J. Koester  
Martin Tadlock  
Marvin D. Jones  
Mary and Dave Streng  
Mary Fahy & Royal Gardner  
Mary Lynn Bodalski  
Mary Miller  
Mary Pat LaFon  
Matt Danahy  
Matt Walsh  
Matthew & Katie Brinson  
Matthew & Mary Weber  
Maximo Marina  
Melenize Graves  
Melinda S. Pitts LaMonte  
Melissa Jane Zodda  
Melissa Kidwell  
Merritt Barrow  
Michael and Christy Krukliniski  
Michael C Addison  
Michael E. Hurley  
Michael Reems  
Michael Spytek  
Michele Horwitz  
Michele Sacks  
Michelle Malek  
Michelle Mize  
Mike Kersten  
Morris Firebaugh  
Mr. & Mrs Lewis H. Hill III  
Mr. & Mrs. Thomas D. Ganley  
Nancy and Ken Ernst  
Nancy E. Muth



# 2019 Donors and Contributors (continued)

Nate Sinclair  
Nathalie Gallays  
Nelson Horne  
Nicholas Schriver  
Nick & Amanda Lord  
Norman Inkpen  
Oneika Tyler  
Pam and Charles Robinson  
Pamela and Michael Arbisi  
Pamela Houle  
Pat Priscoe  
Patricia A Schmieg  
Patricia Black  
Patricia Ginley  
Patricia Hoffman  
Patrick Chalmers  
Patrick Mundus  
Patsy and Ralph Warmack  
Patti and Jerome Boylan  
Paul & Lucy Kelmer  
Paul and Helen Maxson  
Paul E Skinner  
Paul Goodall  
Paul Herndon  
Paul Waton and Annette Randall  
Peter & Jean Hynes  
Phil Gehres  
Phillip & Mary Authier  
Phillip and Karen Sollecito  
Phillip Davis  
Phyllis Clark  
Rasa Saldaitis  
Ray A. Sleszynski, Jr.  
Ray and Peggy Ennis  
Raymond P. Helgren  
Rebecca Falkenberry & Bill Stokes  
Rebelee Seward  
Reiner Schmedes  
Rey Reyno  
Rich & Catherine O'Kelley Rome  
Richard & Barbara Abbott  
Richard & Elizabeth Wilson  
Richard & Karen Gonlin  
Richard and Bonnie Timmons  
Richard and Claire Knowles  
Richard Anderson  
Richard Epling & Suzanne Braley  
Richard H Malchon & Mary Sue Beeler  
Richard Moore  
Richard Schmedes  
Richard Shelton  
Rick & Terri Albert  
Rivero, Gordimer & Company, P.A.  
Rob & Pat Moler  
Rob Tullman  
Robert D'Angel  
Robert Decker  
Robert Shuck  
Robert Uhls  
Robert, Cecily & Savannah Carr  
Robin Young

Robyn Williams  
Rod Hurley  
Roger Kurz  
Roland and Kerstin Westerdal  
Ron Forbes  
Ronald Borsellino  
Ronald Rau  
Ronald Smith  
Roy and Sue Price  
Royal & Karen Garner  
Ruby V. Brembs  
Rudy & Pamela Oswald  
Russell R Winer  
Ruth McFarland  
Ryan M. Schwartz  
Sally Hayes  
Samuel Memberg  
Sarah Goolsby  
Scott & Sheila Fenimore  
Scott & Terra Sroka  
Scott Des Islets  
Sea Salt Restaurant  
Shane Smith  
Shannon Marie Gruber  
Sharla K Fields  
Sharon Beaber  
Sheila Kazar  
Sheila King  
Sheila Morgan  
Sheila Plant  
Shell Jaroy  
Sherri Crouse  
Stacie Blackshear  
Stephanie & R. Kent Bailey  
Stephen & Kaye Phillips  
Stephen A. Scott  
Stephen and Tamara Ham  
Stephen Aversa  
Stephen H. & Elizabeth Reynolds  
Stephen Johnson  
Stephen Wheeler  
Steve & Lisa Zaritsky  
Steve & Sybil Samaha  
Steve and Alona Arsht  
Steve Kallenbach  
Steven Hovsepian  
Steven J. Black  
Sue Fresen & John Myers  
Suncoast Fly Fishers, Inc.  
Susan and Kenneth Grzybowski  
Susan Del Valle  
Susan Kaineg  
Susan Wiley  
Susie Stroud  
Suzie Szul  
Sylvia Smith  
Tamara Morrison, 7855166  
Tamas Peredy  
Tampa Bay Lightning  
Tara L. Hierlihy  
Ted Mallin

Terri and Ken Marks  
Terry & Ginny McCarthy  
Terry Hickox & Mary-Helen Horne  
Terry Kerr  
The Hummingbird Hill Fund  
The Robert and Tami Doll Family  
Charitable Gift Fund  
Theresa and Jacob Anderson  
Theresa Rudzik  
Thomas and Dana Ando  
Thomas and Dixie Crawford  
Thomas Gola  
Thomas Rawls  
Thomas Wilson  
Tiffany McElheran  
Tim & Sandy Roney  
Tim Nugent  
Timothy McLean  
Tom Brown  
Tom Morton  
Tommy Pease  
Tracy and Sean Hyer  
Tracy Bowers  
Tracy Hayes  
Treasure Islettes Inc.  
Trey and Tammy Heyward  
V LaLane McKnight  
V. Gail Collins  
Valarie Nussbaum-Harris  
Virginia Ann Adcock  
Virginia O'Sullivan  
Vivian M. Benci  
Wallace Guthrie  
Wally Vidal  
Ward's Seafood  
Wayde & Virginia Charest  
Wayne Matten  
Wendy & Wayne Griffin  
Wesley Craig  
William & Arlene Pickard  
William Grable  
William McGibony  
William P Novajosky  
William Sutton  
Zach Sherman  
Zackary and Emily Smaridge  
Zene & David Hoult

We apologize for any accidental omissions from this list. Thank you for your support!

# 2019 ANNUAL REPORT



Tampa Bay Watch Marine and Education Center  
3000 Pinellas Bayway South  
Tierra Verde, FL 33715

T: (727) 867-8166

F: (727) 867-8188

[tampabaywatch.org](http://tampabaywatch.org)

[f tampa-bay-watch](#) [@tampabaywatch](#) [TampaBayWatch](#)